

**Jelgava
in figures**

2009



Dear citizens and guests of the city!

We all truly love only one city - the city, which we feel in our hearts and the city we live together with. In such way every citizen in Jelgava loves and is proud about our city. We are proud about our history and our traditions, yet every day is a step forward to establishing new ones. However, we take the most pride for our people, who continuously manifest their wisdom, talent, passion for work and willingness to devote their mind and soul for the city and country to prosper. The history of the city is rich and splendid, yet we are here to shape the future.

No doubt, we would always ask for more, better and faster progress of things. Yet it is more essential to work persistently, assuredly and systematically. We have observed these patterns while developing Jelgava and it is obvious that our city has evolved during last years.

A handwritten signature in black ink, appearing to read "Rāviņš".

Andris Rāviņš,
Chairman of Jelgava City Council

Jelgava in short

Jelgava is situated in the southern part of Zemgale plain.

It is the fourth largest city in Latvia

Total territory of Jelgava is 60,3 km², out of which:

- 1,74km² are open waters
- 1,62km² are parks
- 10,75km² are forests



Jelgava is the only city in Latvia that has the small State Emblem incorporated in the coat of arms of city. The first coat of arms – stag's head on a crimson background, and rights of the city were granted to Jelgava in 1573. However, now the coat of arms depicts head of elk on the purple field.



City flag was approved on the 28th of October, 1938.

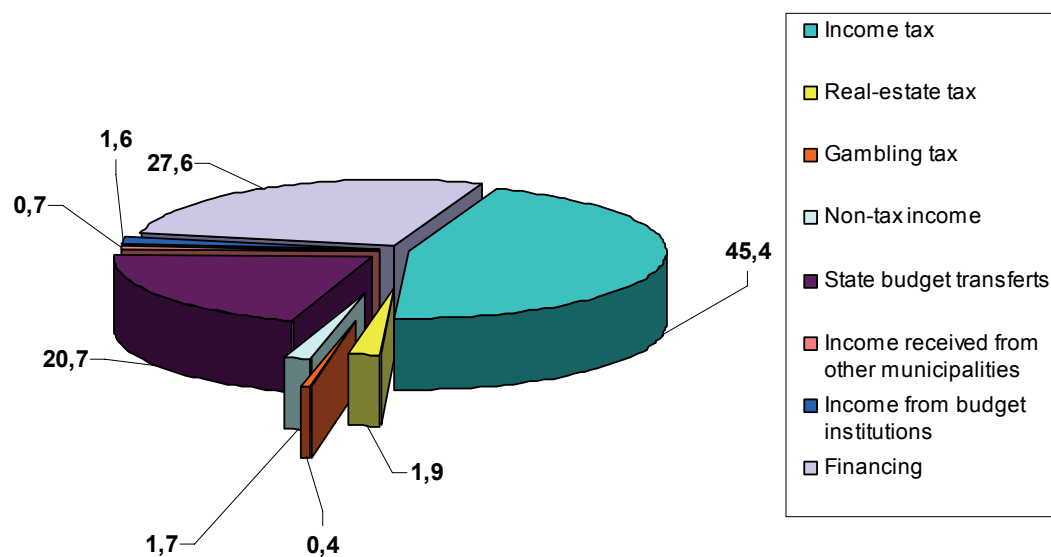
It is divided in two equal parts: overhead is dark blue, but below – red. The coat of arms of the city is placed in the middle of the flag.

Distances:

| | |
|---------------------|---------|
| Jelgava - Riga | 42 km |
| Jelgava - Vilnius | 295 km |
| Jelgava – Tallin | 350 km |
| Jelgava - Moscow | 1053 km |
| Jelgava – Stockholm | 482 km |
| Jelgava – Berlin | 1221 km |
| Jelgava - Vienna | 1403 km |

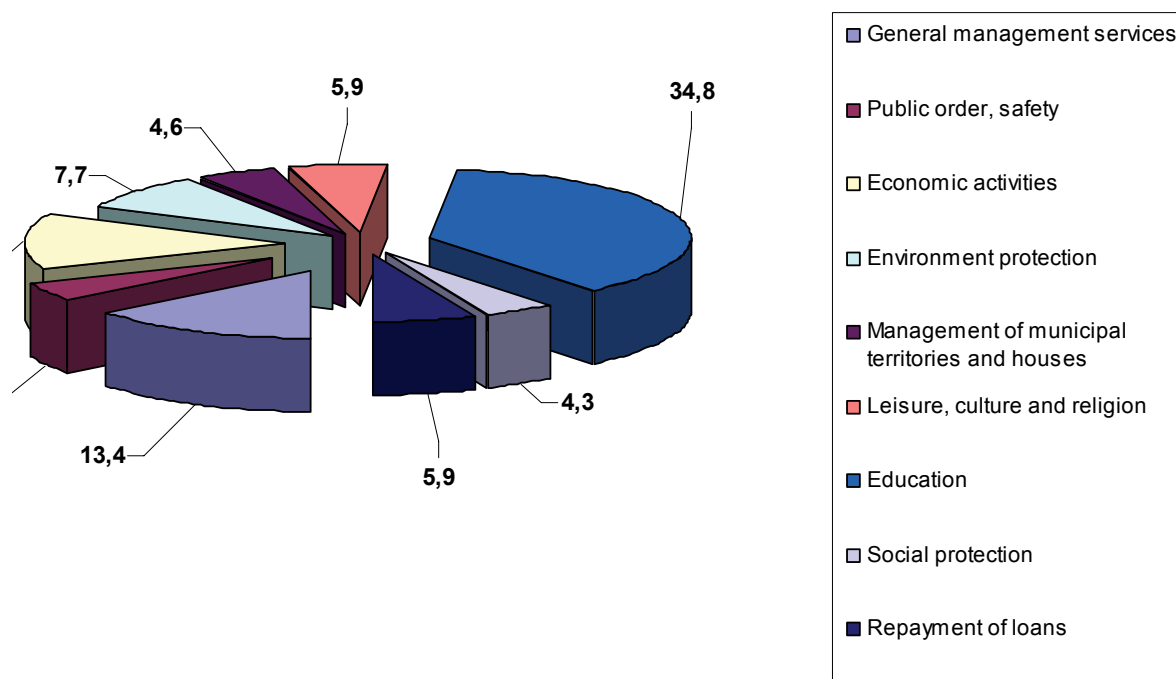
Municipal budget

Budget revenues in 2008 (%)



Source: Jelgava municipality

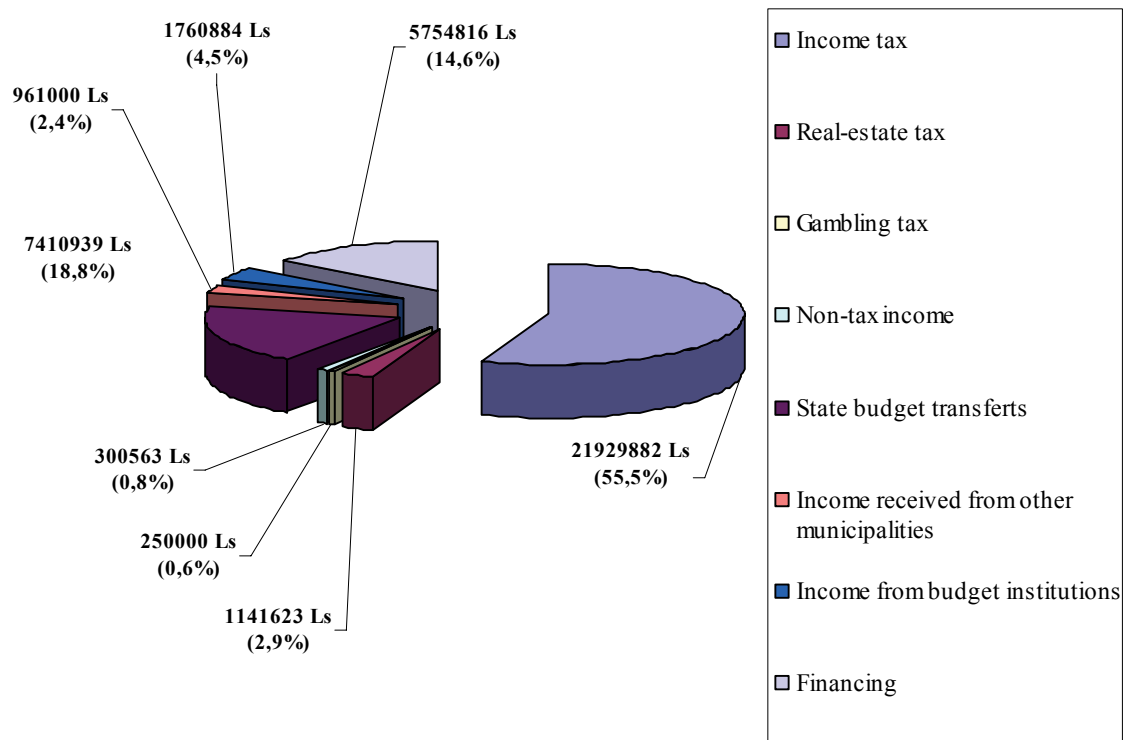
Budget expenditure in 2008 (%)



Source: Jelgava municipality

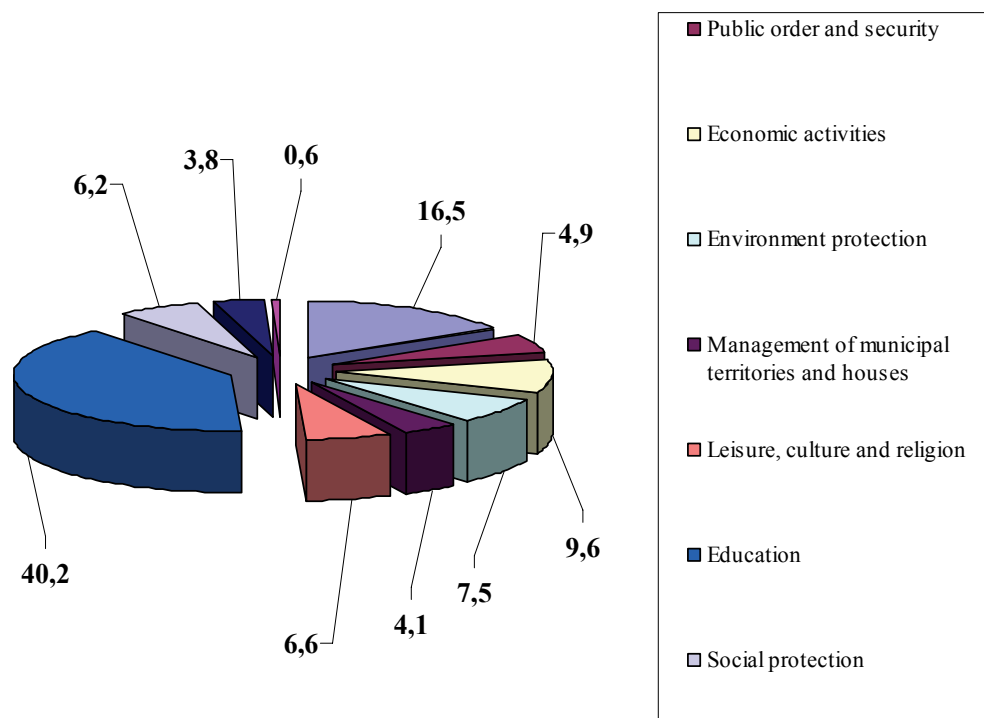
Municipal budget

Planned budget revenues in 2009 (%)



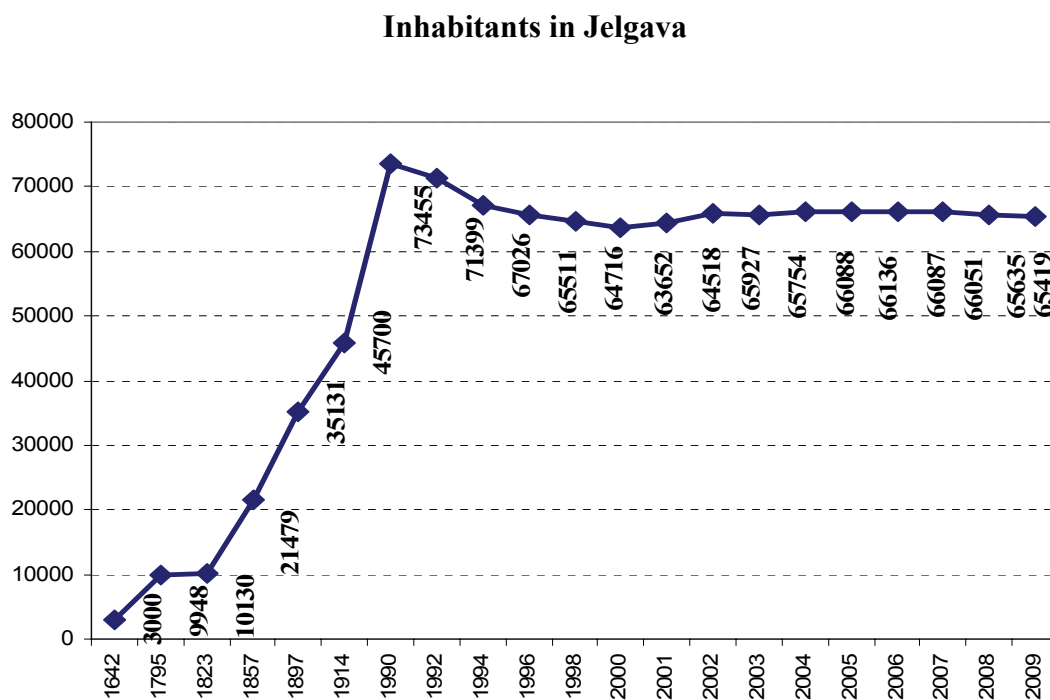
Source: Jelgava municipality

Planned budget expenditure in 2009 (%)

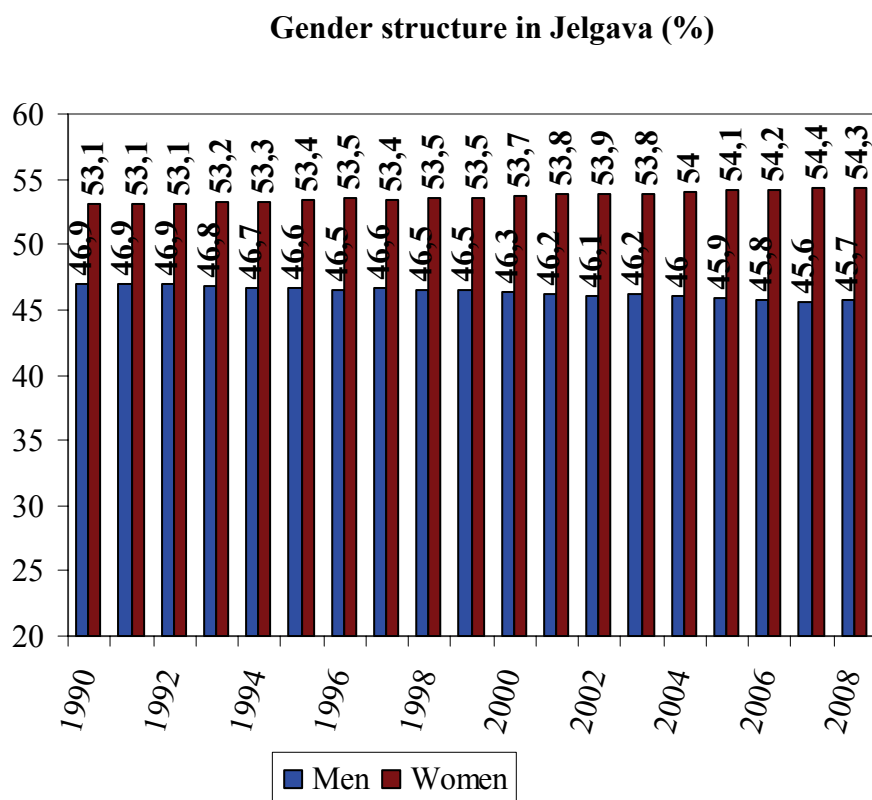


Source: Jelgava municipality

Inhabitants



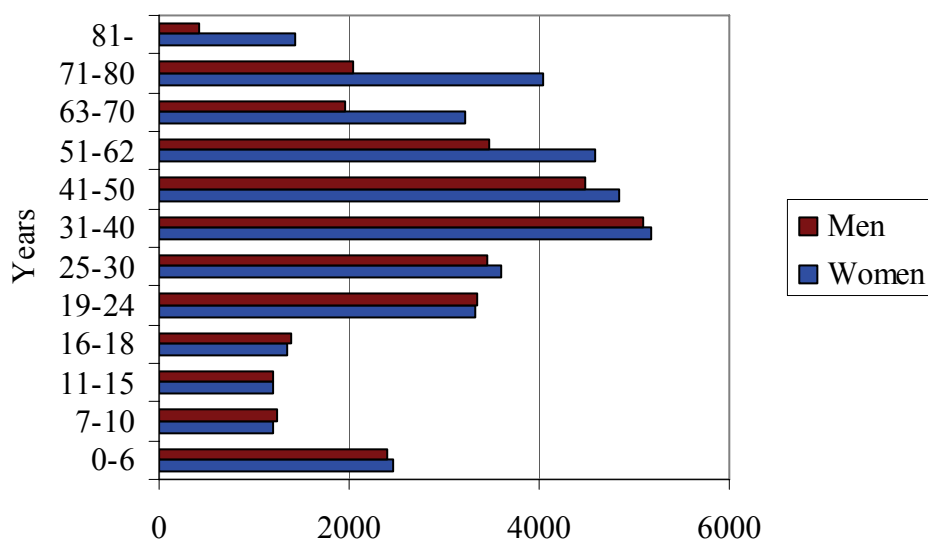
Source: Central Statistical Bureau of Latvia



Source: Central Statistical Bureau of Latvia

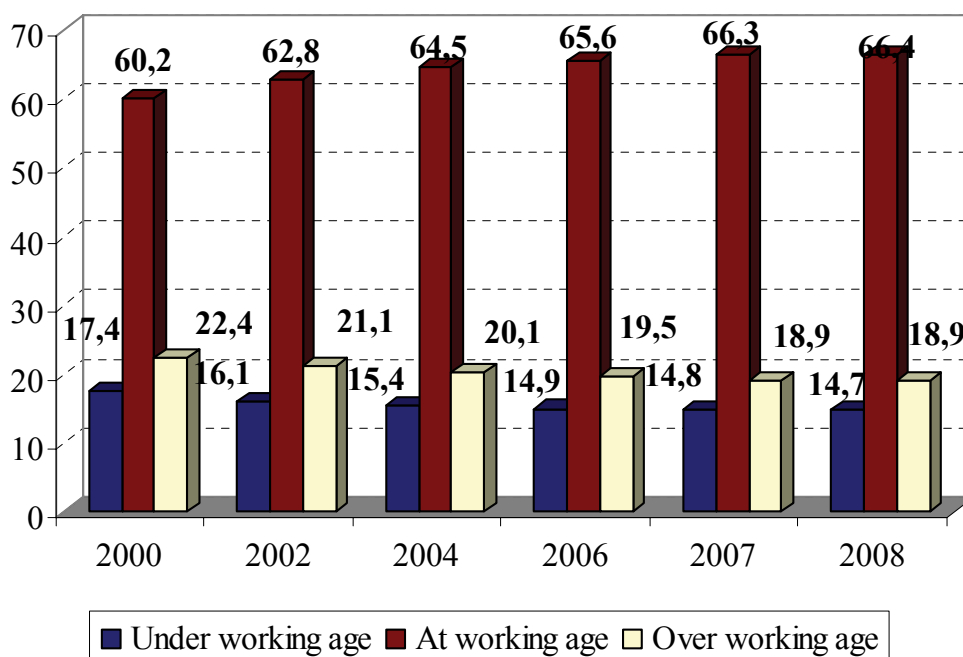
Inhabitants

Gender/age structure in Jelgava



Source: Jelgava municipality, data as of February 4, 2009

Age groups of permanent inhabitants in Jelgava (%)



Source: Central Statistical Bureau of Latvia

Inhabitants

Age groups of permanent inhabitants in Latvia and cities (%)

| | Age groups (2006) | | |
|----------------|------------------------------|---------------------------|-----------------------------|
| | Under working age (%) | At working age (%) | Over working age (%) |
| Jelgava | 14,9 | 65,6 | 19,5 |
| Daugavpils | 12,4 | 66,6 | 21,0 |
| Jurmala | 13,3 | 64,8 | 21,9 |
| Liepaja | 15,0 | 63,5 | 21,5 |
| Rezekne | 13,2 | 66,4 | 20,4 |
| Ventspils | 14,3 | 65,1 | 20,6 |
| Latvia | 14,3 | 64,4 | 21,3 |

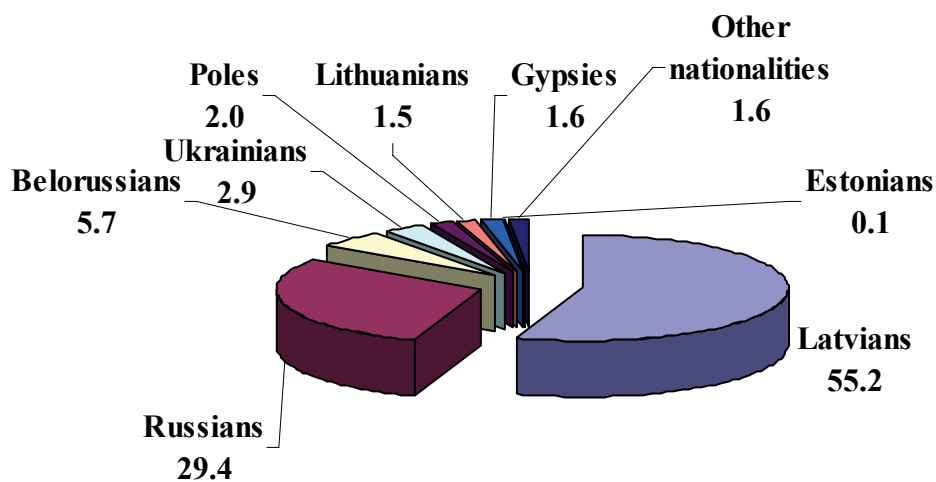
| | Age groups (2007) | | |
|----------------|------------------------------|---------------------------|-----------------------------|
| | Under working age (%) | At working age (%) | Over working age (%) |
| Jelgava | 14,8 | 66,3 | 18,9 |
| Daugavpils | 12,1 | 67,6 | 20,3 |
| Jurmala | 12,9 | 65,7 | 21,4 |
| Liepaja | 14,8 | 64,3 | 20,9 |
| Rezekne | 13,4 | 67,0 | 19,6 |
| Ventspils | 14,0 | 65,9 | 20,1 |
| Latvia | 14,0 | 65,3 | 20,7 |

| | Age groups (2008) | | |
|----------------|------------------------------|---------------------------|-----------------------------|
| | Under working age (%) | At working age (%) | Over working age (%) |
| Jelgava | 14,7 | 66,4 | 18,9 |
| Daugavpils | 12,0 | 67,8 | 20,2 |
| Jurmala | 13,0 | 65,8 | 21,2 |
| Liepaja | 14,7 | 64,4 | 20,9 |
| Rezekne | 13,5 | 66,9 | 29,6 |
| Ventspils | 13,9 | 65,8 | 20,3 |
| Latvia | 13,8 | 65,6 | 20,6 |

Source: Central Statistical Bureau of Latvia

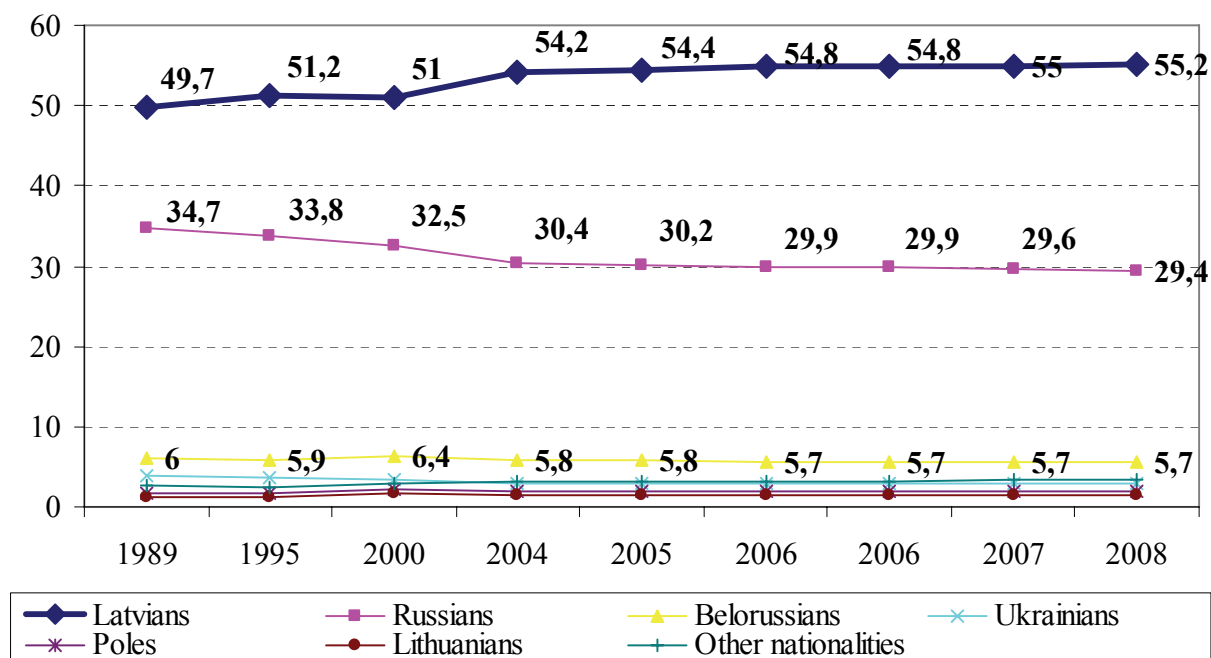
Inhabitants

Nationalities in Jelgava, 2008 (%)



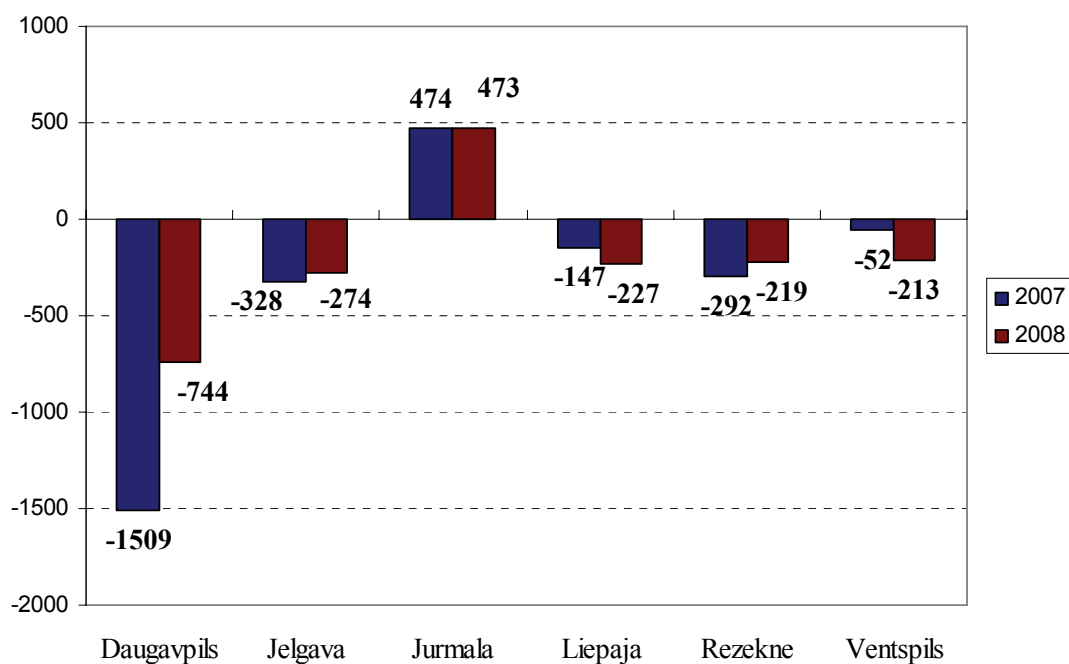
Source: Central Statistical Bureau of Latvia

National composition of inhabitants (%)



Source: Central Statistical Bureau of Latvia

Migration balance in cities (2007 and 2008)



Source: Central Statistical Bureau of Latvia

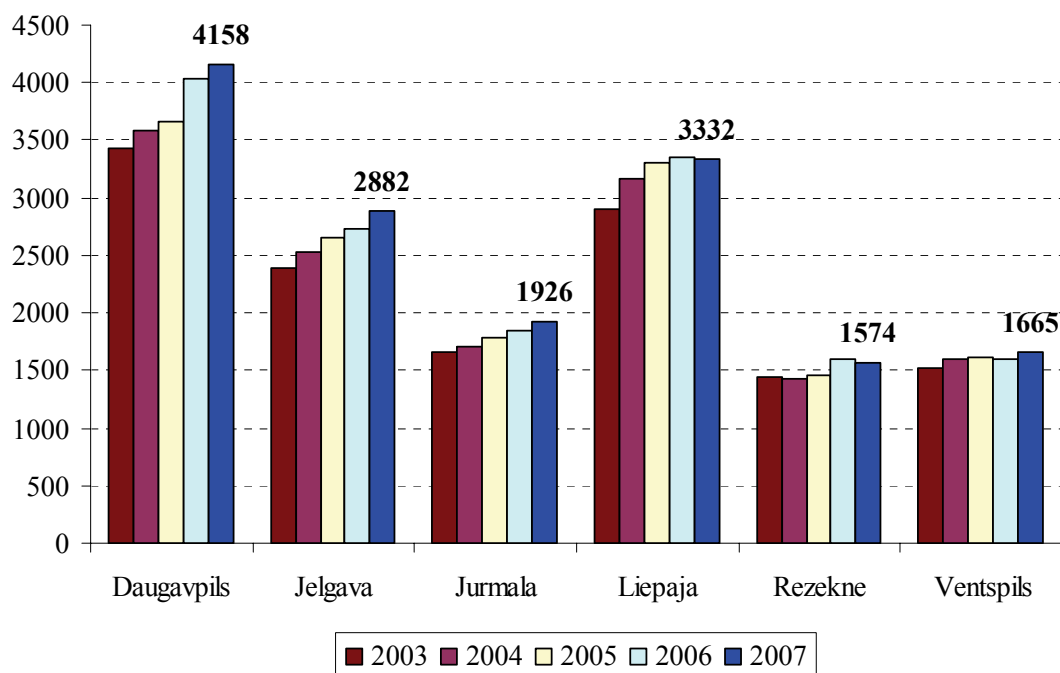
Natural growth in Latvia and cities

| | Natural growth, per 1000 inhabitants | | | Natural growth (2008) | |
|----------------|--------------------------------------|-------------|-------------|-----------------------|--------------------------------------|
| | Year 2005 | Year 2006 | Year 2007 | Natural growth | Natural growth, per 1000 inhabitants |
| Jelgava | -2,0 | -3,1 | -1,4 | 58 | 0,9 |
| Daugavpils | -6,9 | -6,5 | -5,9 | -357 | -3,4 |
| Jurmala | -5,4 | -5,6 | -5,4 | -183 | -3,3 |
| Liepaja | -3,6 | -3,4 | -3,3 | -76 | -0,9 |
| Rezekne | -6,3 | -6,0 | -4,7 | -138 | -3,9 |
| Ventspils | -3,9 | -4,3 | -4,4 | -123 | -2,9 |
| Latvia | -4,9 | -4,8 | -4,3 | -7058 | -3,1 |

Source: Central Statistical Bureau of Latvia

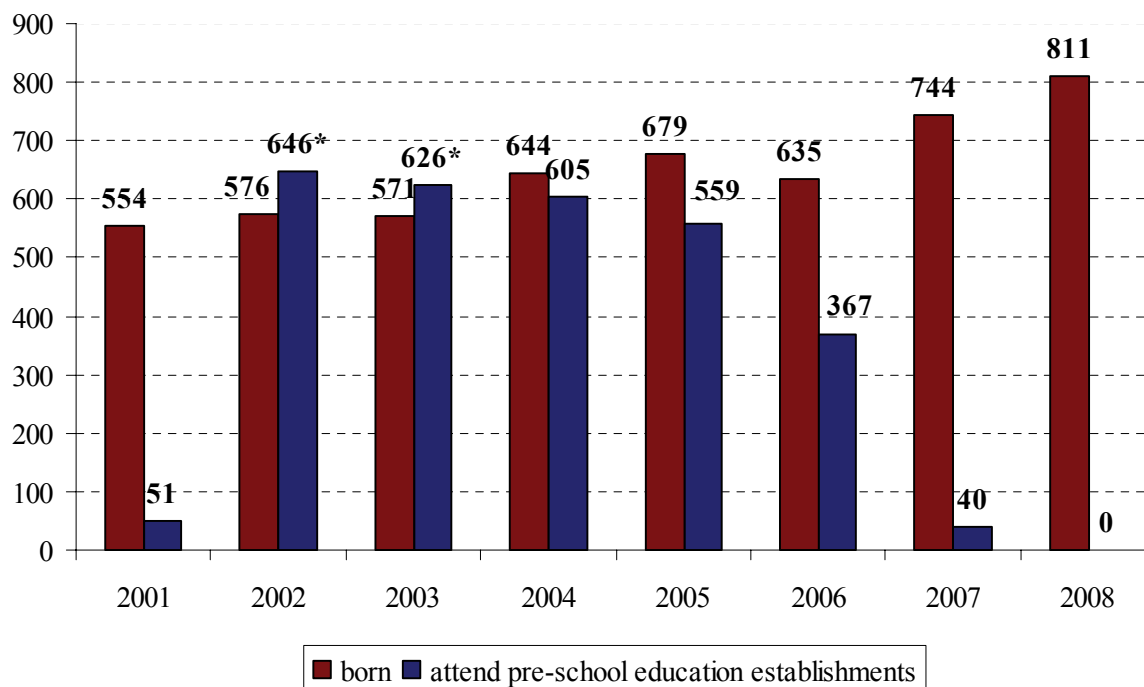
Education

Children in pre-school educational establishments in cities



Source: Central Statistical Bureau of Latvia

Children attending pre-school educational establishments in Jelgava, grouped by year of birth, school year 2008/09

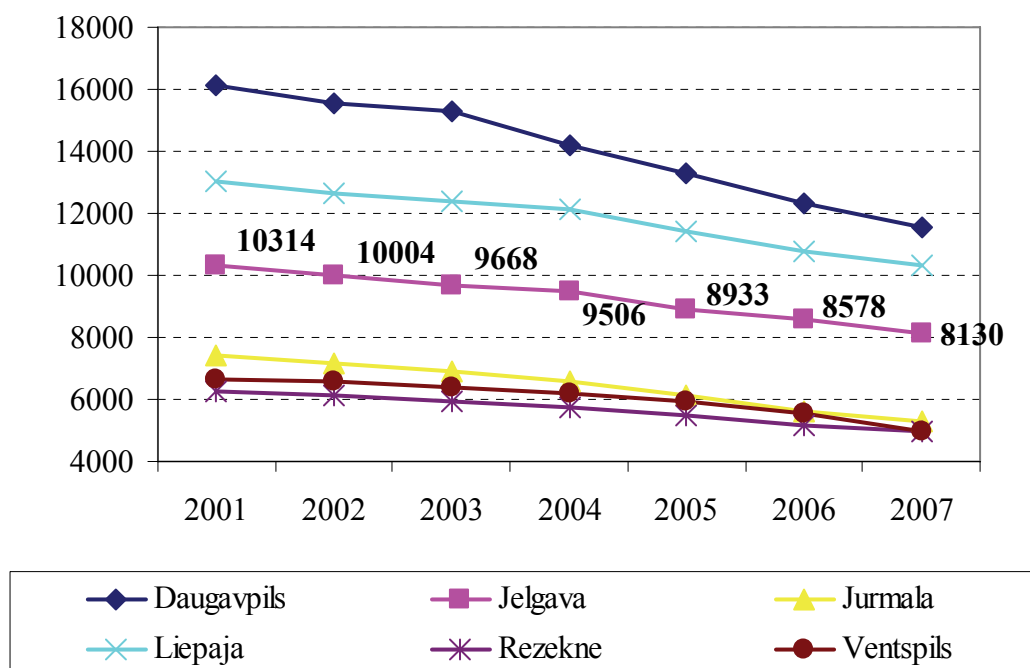


* including children, who attend pre-school educational classes at schools

Source: Jelgava municipality

Education

Pupils in comprehensive schools in cities



Source: Central Statistical Bureau of Latvia

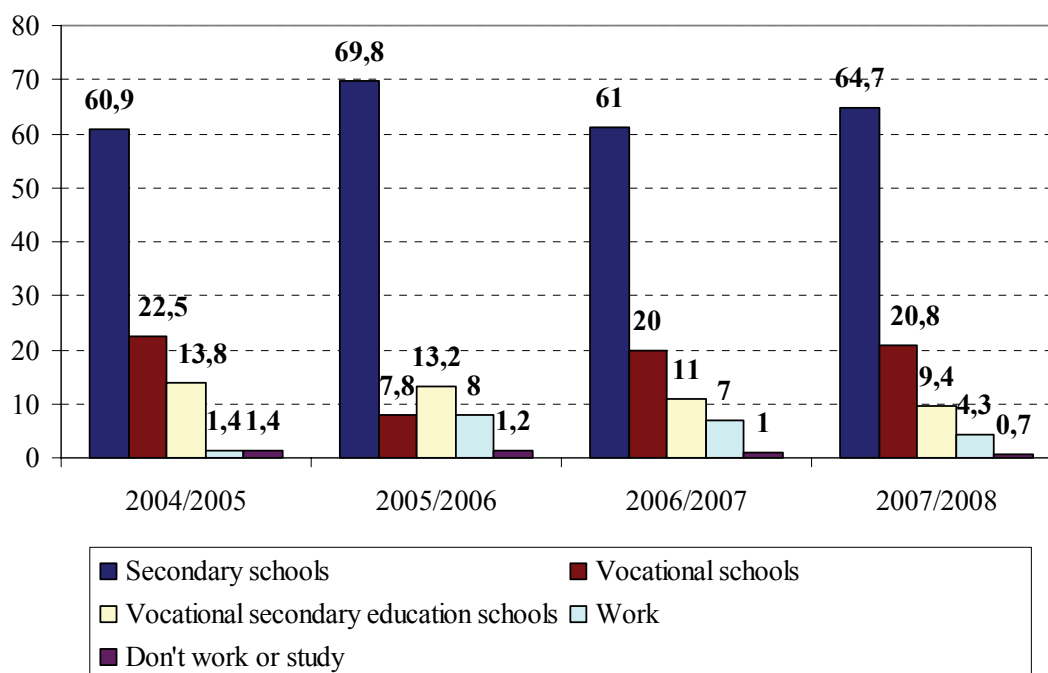
Graduates from Jelgava Crafts secondary school in 2008

| No | Profession | Graduates |
|----|--------------------|------------|
| 1. | Confectioner | 11 |
| 2. | Cook | 22 |
| 3. | Cook's mate | 19 |
| 4. | Hairdresser | 21 |
| 5. | Retail businessman | 19 |
| 6. | Locksmith | 5 |
| 7. | Fitter | 10 |
| | In total | 107 |

Source: Jelgava municipality

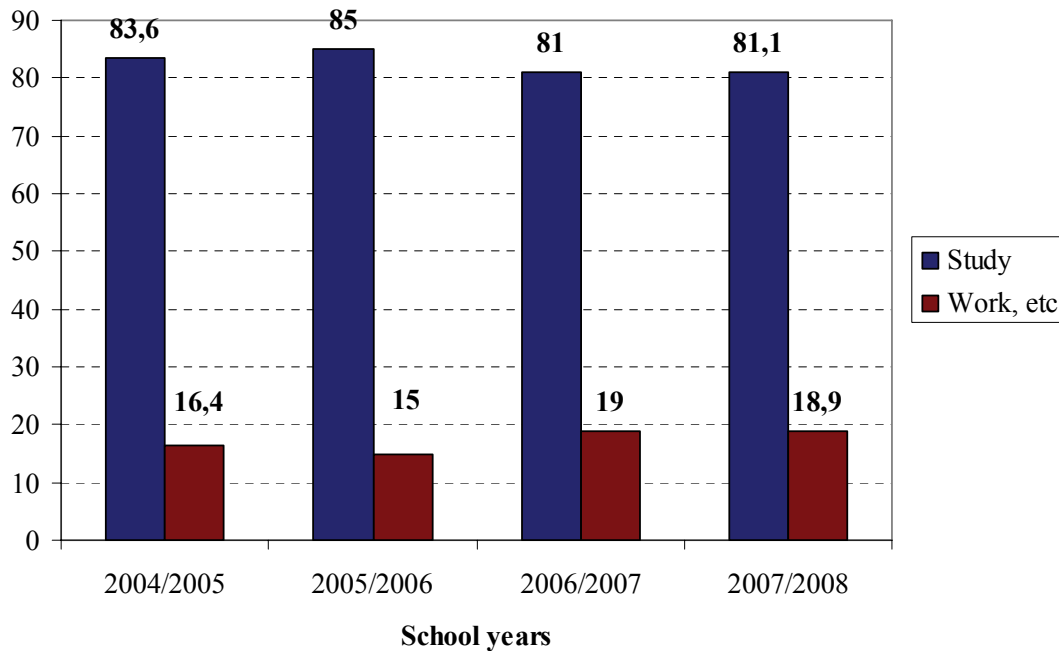
Education

Graduates from Form 9, who continue their studies (Jelgava, %)



Source: Jelgava municipality

Graduates from Form 12, who continue their studies (Jelgava, %)



Source: Jelgava municipality

Education

Graduates from Form 9, who continue their studies in school year 2008/09 (Jelgava, 2008)

| Graduates (Form 9) | Studying | | |
|--------------------|---|--------|----|
| | Educational establishments | Pupils | % |
| 824 | General secondary education schools | 488 | 59 |
| | Vocational education establishments (in total) | 189 | 23 |
| | Jelgava Crafts secondary school | 97 | 12 |
| | Jelgava Trade secondary school | 70 | 8 |
| | Other vocational secondary education schools | 94 | 11 |
| | | | |

Source: Jelgava municipality

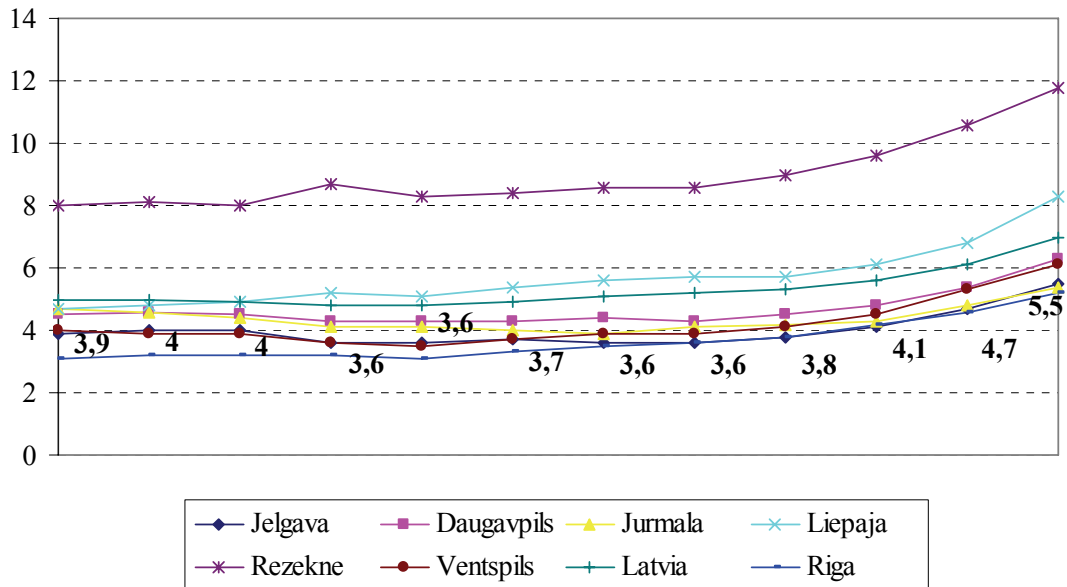
Graduates from Form 12, who continue their studies in school year 2008/09 (Jelgava, 2008)

| Graduates (Form 12) | Studying | | |
|---------------------|--|----------|----|
| | Higher educational establishments | Students | % |
| 619 | Higher educational establishments (in total) | 505 | 82 |
| | Latvia University of Agriculture | 176 | 28 |
| | 1 st level higher vocational education establishments | 23 | 4 |
| | | | |

Source: Jelgava municipality

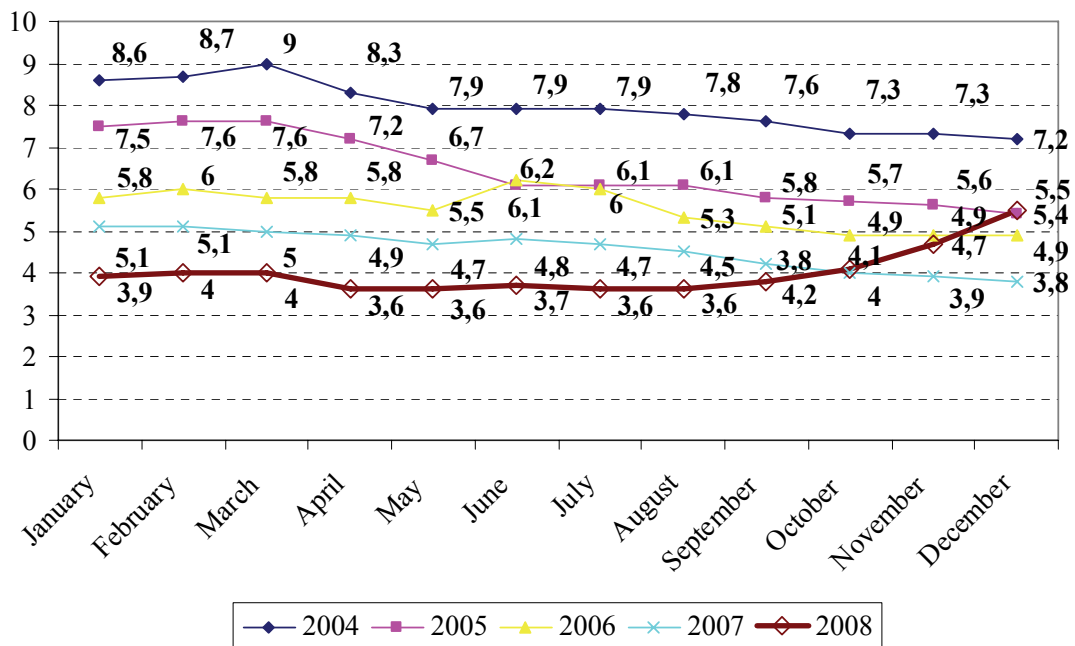
Employment

Registered unemployment rate in Latvia and cities in 2008 (%)



Source: Employment State Agency

Registered unemployment rate in Jelgava (%)



Source: Central Statistical Bureau of Latvia and Employment State Agency

Employment

Inhabitants of Jelgava, who work in Riga (2002-2008)

| Year | Number of employed people who live in Jelgava, yet work in Riga |
|-------------|--|
| 2008 | 19365 |
| 2007 | 14799 |
| 2006 | 13942 |
| 2005 | 14217 |
| 2004 | 13544 |
| 2003 | 12949 |
| 2002 | 12024 |

Source: State Revenue Service

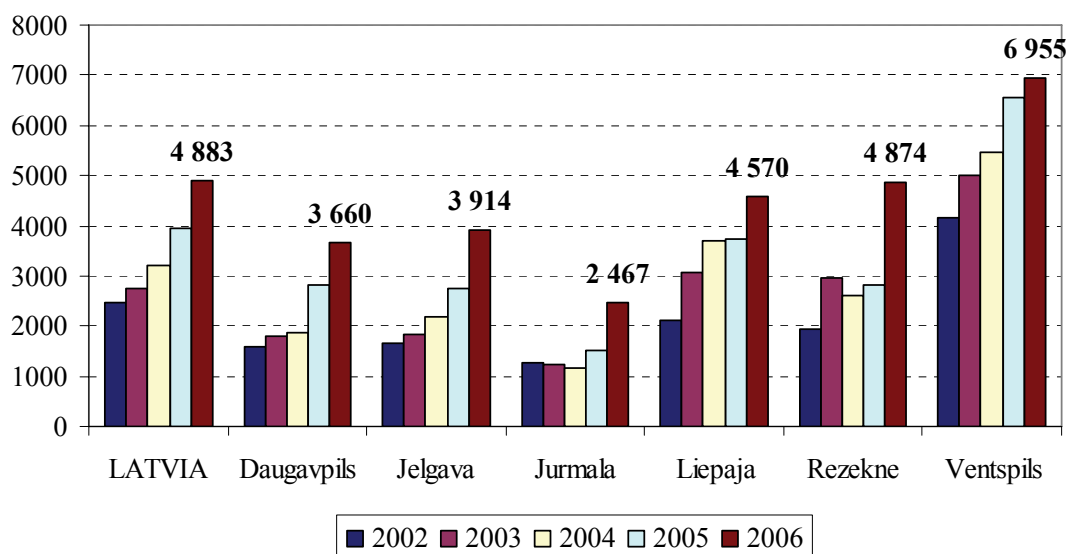
People from neighbouring districts, who work in Jelgava (2008)

| Declared place of residence | Number of employed people |
|------------------------------------|----------------------------------|
| Riga | 2148 |
| Riga district | 614 |
| Jelgava district | 5262 |
| Jelgava | 20547 |
| Dobele district | 1152 |
| including Dobele | 346 |
| Bauska district | 534 |
| including Bauska | 133 |

Source: State Revenue Service

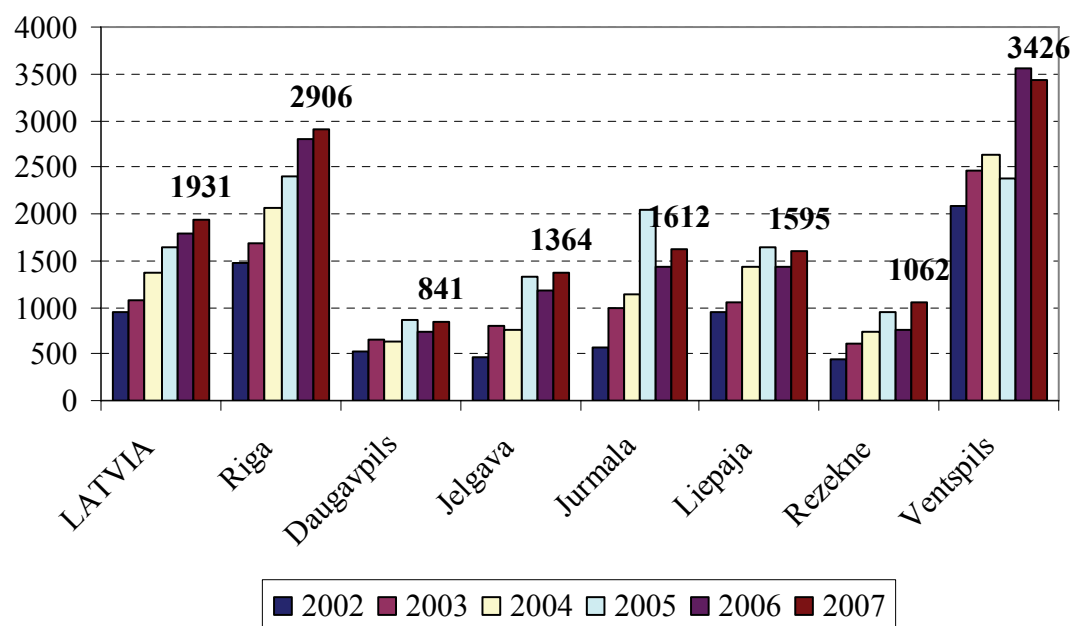
Economy

Gross domestic product in Latvia and cities, LVL per capita



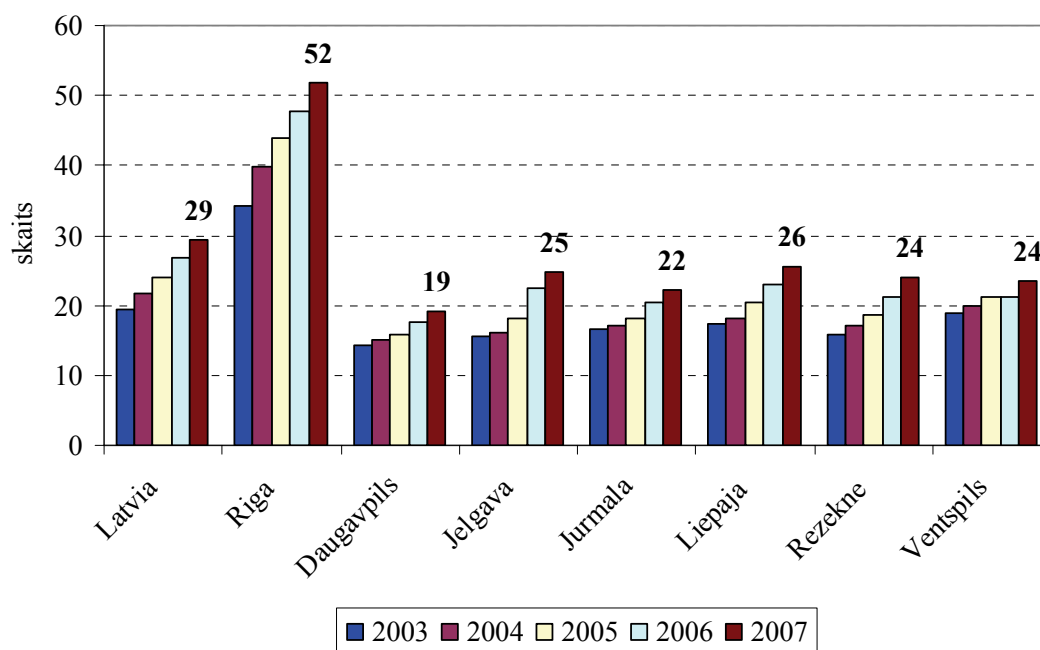
Source: Central Statistical Bureau of Latvia

Non-financial investments in Latvia and cities, LVL per capita



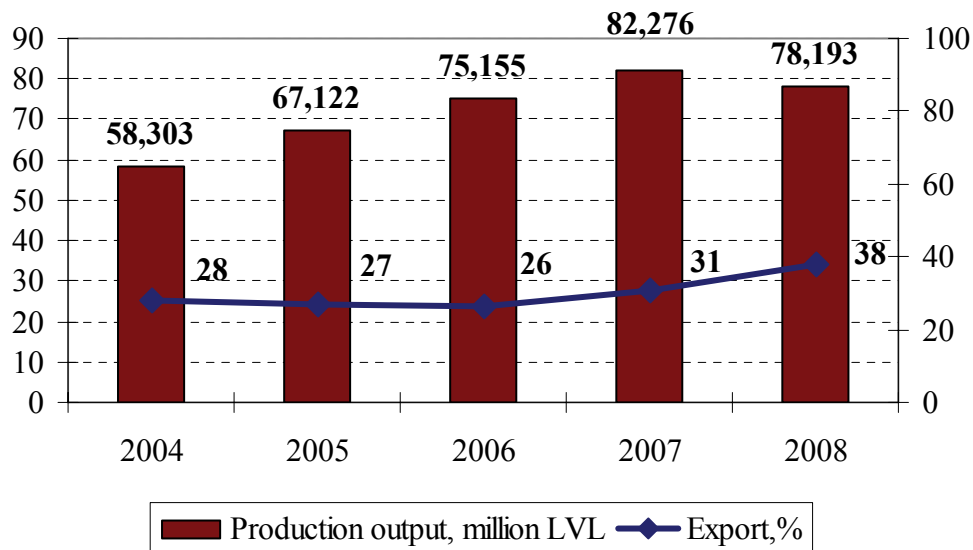
Source: Central Statistical Bureau of Latvia

Active businesses in Latvia and cities (per 1000 inhabitants)



Source: Central Statistical Bureau of Latvia

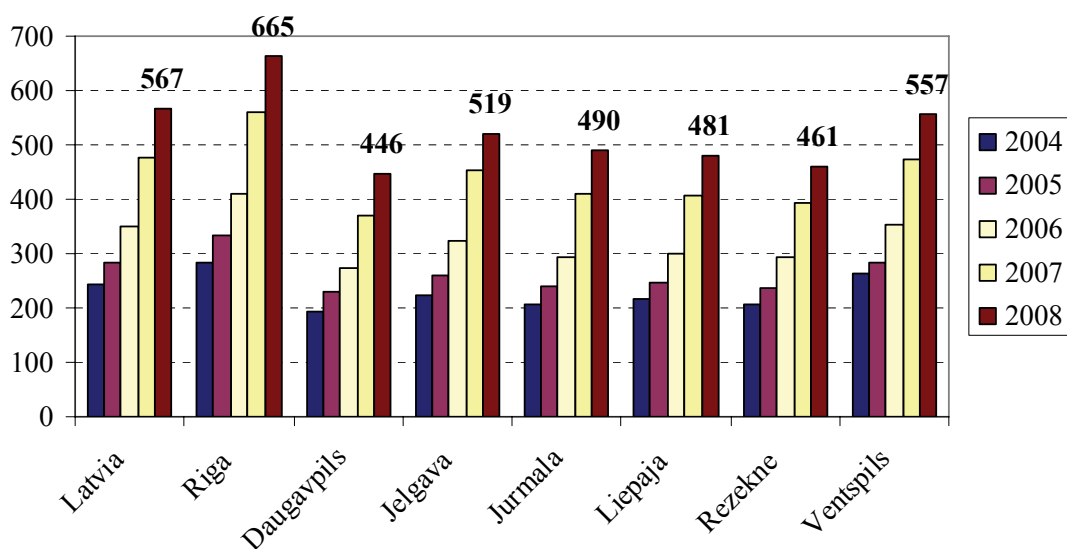
Output of industrial production in Jelgava (thousands, LVL)



Source: Central Statistical Bureau of Latvia

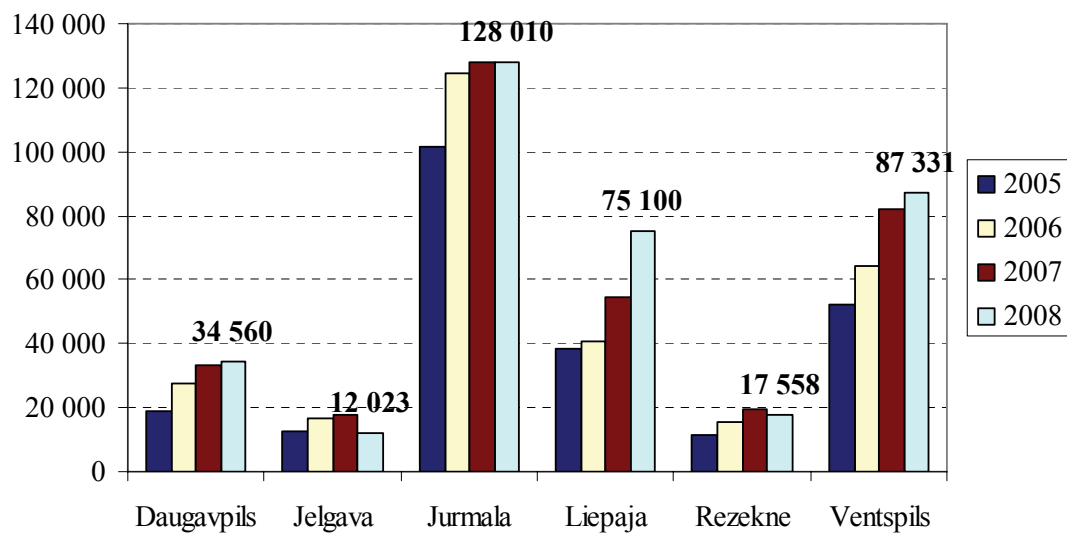
Economy

Average gross salary in public sector in Latvia and cities (LVL)



Source: Central Statistical Bureau of Latvia

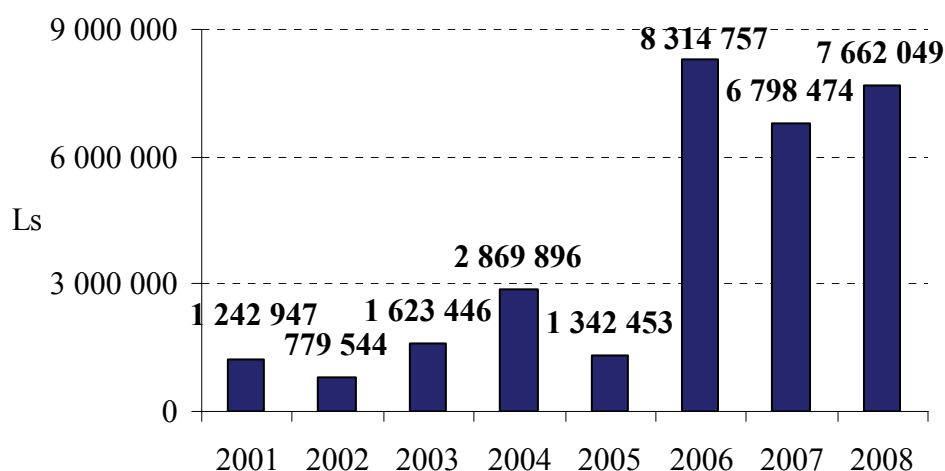
People serviced in hotels and other tourism related lodging locations in cities



Source: Central Statistical Bureau of Latvia

Projects

Funding attracted by municipality and municipal establishments, 2001-2008 (LVL)



Source: Jelgava municipality

* Amount of attracted financing in corresponding year of account is calculated based on concluded agreements within the given projects in the respective year

Projects prepared and submitted by municipality and municipal establishments (2008)

| | Projects | Proportion (%) |
|---------------------------|-----------|----------------|
| Submitted in total | 69 | 100 |
| From which: | | |
| approved | 41 | 59 |
| declined | 26 | 38 |
| result not known | 2 | 3 |

Source: Jelgava municipality

Refer to www.jelgava.lv for detailed information

Funding attracted by Jelgava municipality and municipal establishments in projects (2008)

| | Total sum, LVL | Proportion of financing (%) | Projects | Proportion of projects (%) |
|---|-------------------|--------------------------------------|-----------|-------------------------------------|
| Funding attracted in 2008, including | 7 662 049 | <i>100</i> | 35 | <i>100</i> |
| municipality | 2 895 496 | <i>38</i> | 12 | <i>34</i> |
| Municipal establishments | 4 766 553 | <i>62</i> | 23 | <i>66</i> |

Source: Jelgava municipality

Projects

Major projects (financing agreements signed in 2008)

| Project | Total funding, LVL | Financing sources |
|--|--------------------|--|
| Renovation and energy-efficiency measures in Primary school No.3 | 327 000 | State Investment programme (SIP) – 50%, municipality – 50% |
| Construction of extension to Secondary school No.4 | 1 901 656 | SIP – 50%, municipality – 50% |
| Establishment of Zemgale regional agency for supporting energy management and efficiency in municipalities of Zemgale region | 338 036 | The Intelligent Energy - Europe programme – 51%, municipality – 12%, project partners – 37% |
| Promotion of PPP for management of streets in Jelgava city | 281 122 | European Economic Area and Norwegian Financial mechanism (EEA and NFM) – 85%, municipality – 15% |
| Raising energy-efficiency in Jelgava | 4 401 974 | European Regional Development Fund – 19%, "Fortum Jelgava" Ltd. - 81% |
| Development of multifunctional support centre for children with special needs | 281 121 | EEA and NFM – 85%, municipality – 15% |

Source: Jelgava municipality

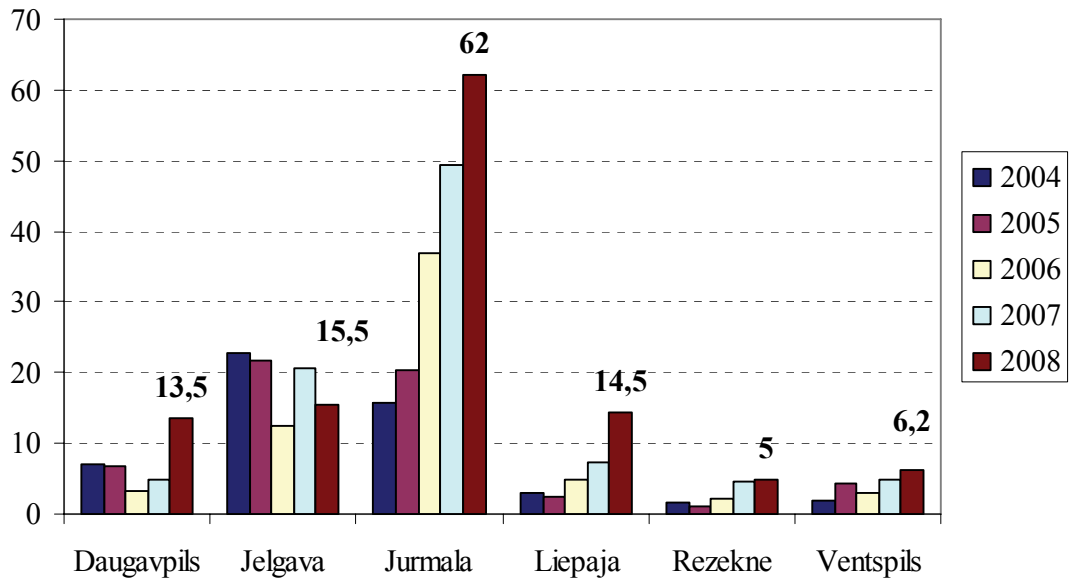
Funding attracted by Jelgava municipality and municipal establishments in projects, grouped by municipal functions (2008)

| | |
|------------------|------------------|
| Public utilities | 5 031 132 |
| Education | 2 595 664 |
| Culture | 31 320 |
| Social sector | 3 933 |
| In total | 7 662 049 |

Source: Jelgava municipality

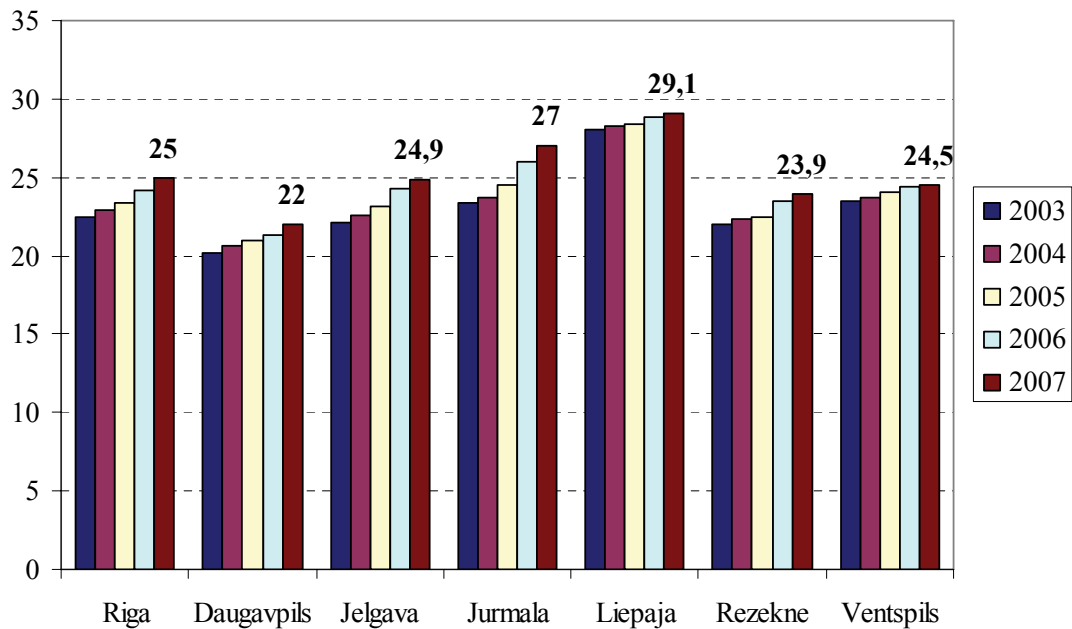
Construction

Constructed dwelling houses in cities (thousands of m2)



Source: Central Statistical Bureau of Latvia

Housing fund in cities, per capita on average (m2)



Source: Central Statistical Bureau of Latvia

Construction

Issued construction permits and buildings launched in Jelgava (2008)

| No | Buildings | Issued construction permits | | | Buildings launched | | |
|-----------|----------------------------------|-----------------------------|---------------|----------------------------|--------------------|---------------|----------------------------|
| | | In total | New buildings | Reconstruction, renovation | In total | New buildings | Reconstruction, renovation |
| | Buildings in total (I+II) | | | | | | |
| I | Buildings | | | | | | |
| 1. | Dwelling houses | 179 | 112 | 67 | 124 | 98 | 26 |
| 1.1. | Individual houses | 169 | 107 | 62 | 119 | 78 | 41 |
| 1.2. | Apartment houses | 10 | 5 | 5 | 5 | - | 5 |
| 2. | Non-residential buildings | 99 | 76 | 23 | 54 | 34 | 20 |
| 2.1. | Factories | 8 | 7 | 1 | 9 | 6 | 3 |
| 2.2. | Shops (trade premises) | 5 | 1 | 4 | 13 | 5 | 8 |
| 2.3. | Servicing buildings | 5 | 1 | 4 | 8 | 2 | 6 |
| | Other buildings | 39 | | | 36 | 15 | 21 |
| | | | | | | | |
| II | Engineering buildings | | | | | | |
| 1. | streets | 9 | 1 | 8 | 11 | 5 | 6 |
| | etc. | | | | 4 | 2 | 2 |

Source: Jelgava municipality

Major objects that were put into commission in 2008

1. Renovation of dwelling house (4. linija 1)
2. Construction of roof and renovation of facade of hospital (1st phase), renovation of Sterilization ward, insulation of hospital and procurement department building facade (6 Brivibas bulvaris)
3. Office building (19 Atmodas iela)
4. Separated waste collection points (20 Salnas iela, 6n Paula Lejina iela)
5. Car showroom building (36 Atmodas iela)
6. Fast food restaurant (2a Loka magistrale)
7. Reconstruction of business and technologies incubator building „Valdekas BITIS”, 1st phase (22 Rigas iela)
8. Leisure activities and parachute jumping certification centre, 1st phase (4 Peldu iela)
9. Plastic pipes production plant „Evopipes” (2a Langervaldes iela)
10. Rapeseed and grain pre-treatment and storage premises for company „Jelgavas dzirnavas”, 2nd phase of construction (2 Bauskas iela)
11. Memorial site „Path of suffer” at Svetbirze (12a Kalnciema cels)
12. Household waste sorting site, managed by Jelgava and Bauska municipal agency „Zemgales EKO” (84 Ganibu iela)
13. Reconstruction of building and establishment of business centre „Zemgale” (47 Pasta iela)
14. Reconstruction of Riga street, section between Loka magistrale and administrative border of city at Ozolnieki
15. Reconstruction of Traktoristu street, 1st phase
16. Reconstruction of Lacpleša street, section between Riga street and Kronvalda street
17. Reconstruction of Jelgava railway station (1 Stacijas iela)
18. Reconstruction of Ganibu street, section between Atmodas street and 1. linija, 1st phase
19. Heat-supply facility and co-generation station (47 Aviācijas iela)
20. Reconstruction of trade and leisure centre „Tonuss”, 3rd phase (12 Uzvaras iela)

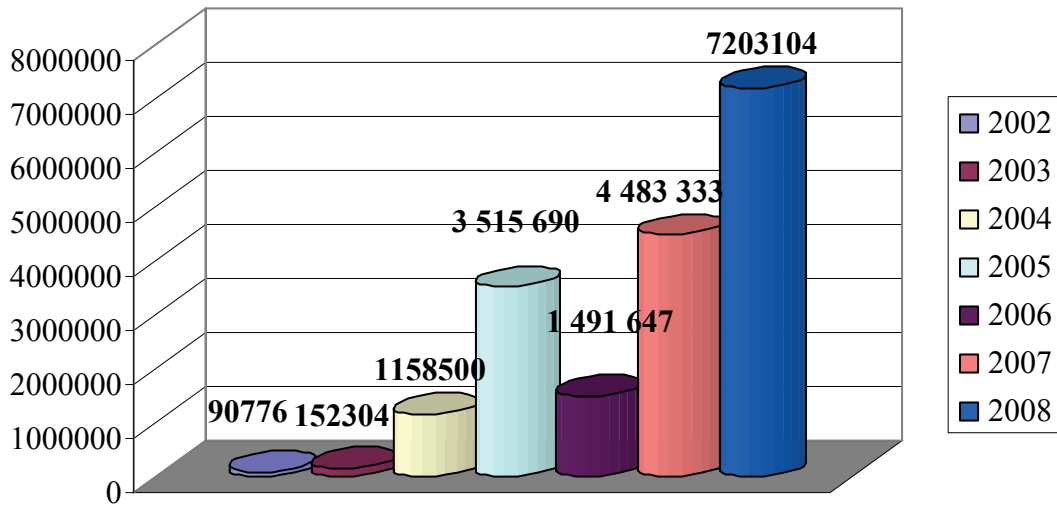
Major projects that were granted a construction permit in 2008

1. Pre-sale maintenance centre for new cars (37a Aspazijas iela)
2. Car production industrial complex Co-generation station, Storage facility, Administrative building (42 Avicacijas iela)
3. Reconstruction of office building (3a Liela iela)
4. Construction of road (Ziedinu cels)
5. Zemgale Olympic centre – multi-functional sport complex (31b Brivibas bulvāris, 26 Kronvalda iela, 1a Strazdu iela)
6. Leisure activities and parachute jumping certification centre (4 Peldu iela)
7. Reconstruction of Lacplesa street, section between Riga street and Kronvalda street
8. Reconstruction of building to accomodate abbey (11 Katolu iela)
9. Flowers and vegetables/fruit sales market (51/11 pasta iela)
10. Co-generation station, 0 phase (71 Ganibu iela)
11. Car and lorry wash service (32 Aviacijas iela)
12. Reconstruction of Ausekla street, section between P. Brieza street and Blaumana street
13. Improvement of inner yard near Driksas, Pasta, Raiņa and Katolu street
14. Reconstruction of apartaments house (46 Filozofu iela)

Objects put into commission in 2008:

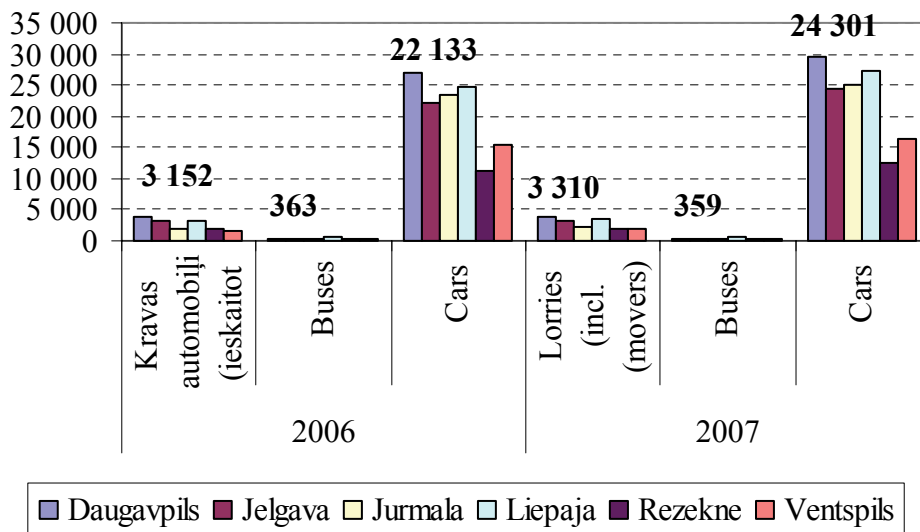
- Family houses (constructed and reconstructed) – 20897 m²;
- Office buildings (total area – 7503 m²);
- Wholesale and retail sale premises (total area – 3970 m²);
- Industrial premises and warehouses (total area – 8024 m²);

Finances allotted to reconstruction of streets, LVL (2002-2008)



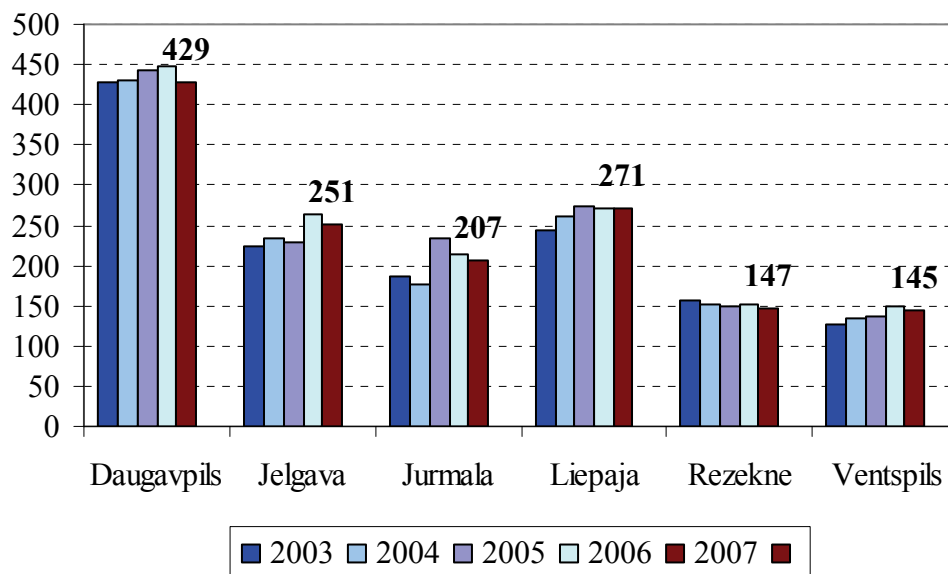
Source: Jelgava municipality

Number of registered cars in cities



Source: Central Statistical Bureau of Latvia

Number of doctors in cities

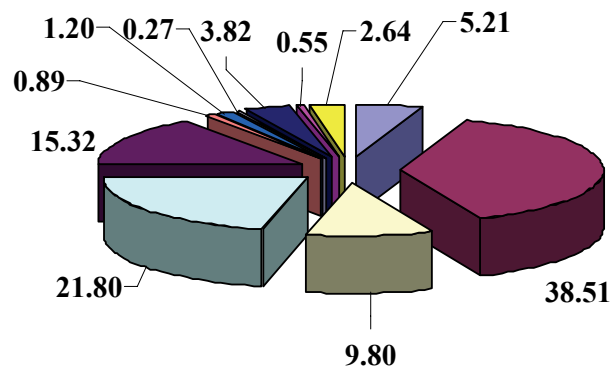


Source: Central Statistical Bureau of Latvia

There are 43 primary care doctors in Jelgava, 1665 patients per doctor on average. There are 283 beds in city hospital; 52 doctors, one pharmacist, 150 nurses, midwives and laboratory assistants work in the hospital. 110 nurse assistants and aidmen take care of patients, while 60 people are employed at procurement department. More than 11655 patients a year receive medical aid; the average treatment period is 6,7 days.

Social sector

Municipal social benefits in 2008 (%)



| | |
|---|---|
| ■ | Granted minimal income support |
| ■ | Housing support |
| ■ | Benefit for individual heating expenses |
| ■ | Benefit for payment for medical treatment |
| ■ | Benefit for catering in schools and for services in kindergartens |
| ■ | Benefit in emergency situations |
| ■ | Death grant |
| ■ | Benefit to persons for acclimatisation after serving the sentence |
| ■ | Benefit for education and upbringing of children |
| ■ | Benefit to orphans |
| ■ | Benefit for foster families |

Source: Jelgava municipality

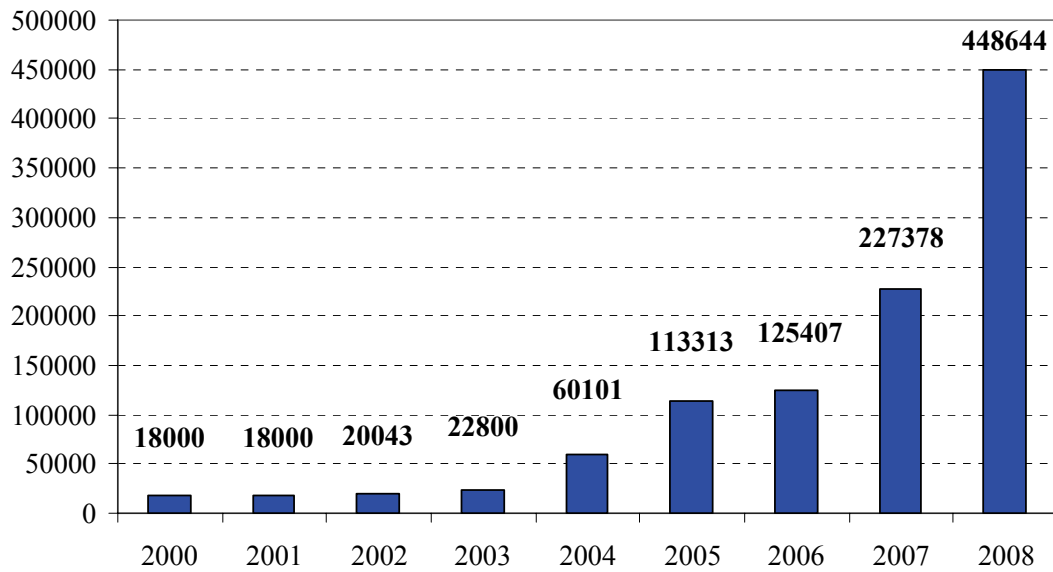
Profiles of families receiving social benefits, grouped by income level and material position

| Family type | Number of families | Number of persons | Social benefits (LVL) |
|--|--------------------|-------------------|-----------------------|
| 1-2 children and one or more able-bodied adults | 301 | 906 | 99372 |
| 1-2 children and no able-bodied adults | 44 | 109 | 15056 |
| 3 and more children and one or more able-bodied adults | 135 | 746 | 79905 |
| 3 and more children and no able-bodied adults | 5 | 24 | 4881 |
| No children and with one or more able-bodied adults | 311 | 343 | 40725 |
| No children and no able-bodied adults | 2617 | 2983 | 484021 |
| In total | 3313 | 5111 | 723960 |

Source: Jelgava municipality

Culture

Financing allotted to culture events, LVL (2000-2008)



Source: Jelgava municipality

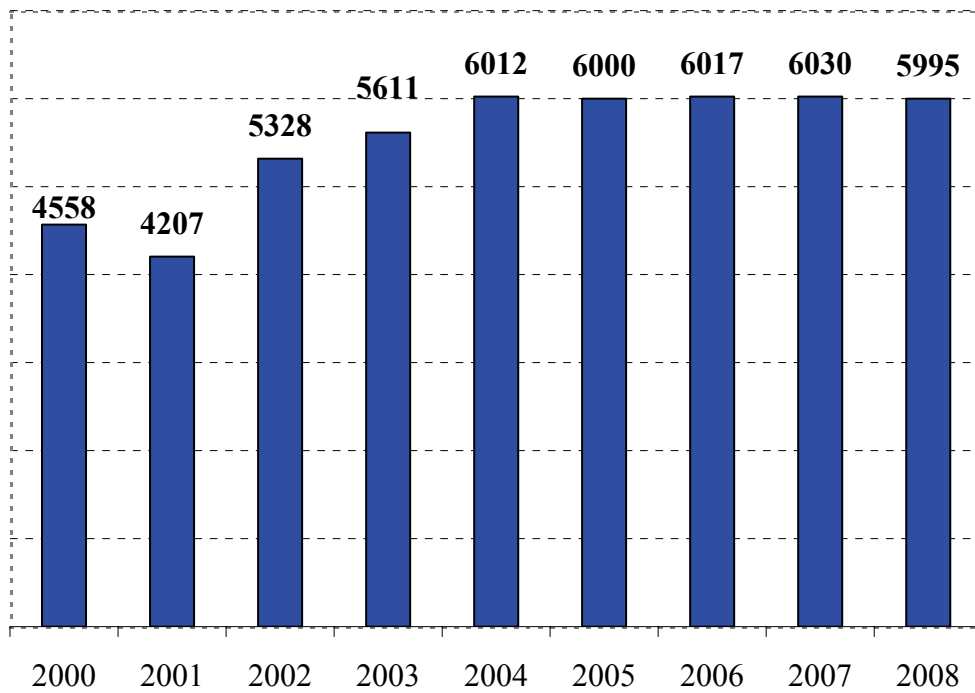
Events

In 2008 the attendance to culture events has increased by ~3 per cent. Whereas attendance to open-air events increased by 12 per cent.

Culture events

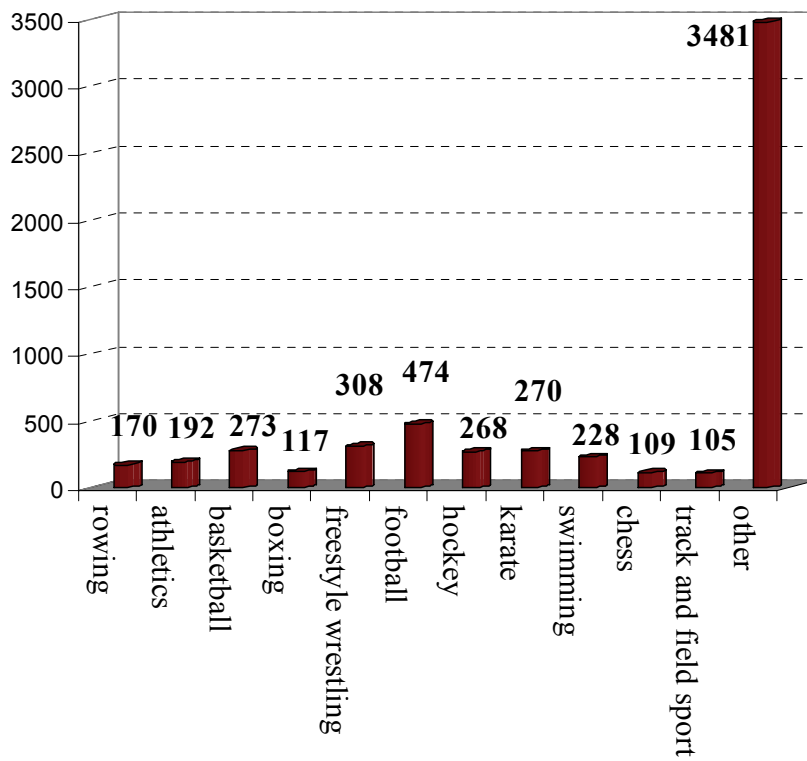
| | Year 2006 | Year 2007 | Year 2008 |
|---|----------------|----------------|----------------|
| Culture events organised in Jelgava Culture house | 237 | 245 | 250 |
| Open-air events | 35 | 40 | 51 |
| Events in total | 272 | 285 | 301 |
| People who attended culture events in Jelgava Culture house | 141 027 | 151 258 | 155 321 |
| People who attended open-air events | 107 187 | 159 210 | 178 379 |
| Attendance in total | 248 214 | 310 468 | 333 700 |

People involved in sport activities (2000-2008)



Source: Reports of sport clubs

People involved in sport activities, grouped by type, 2008



Source: Reports of sport club

Jelgava in comparison

Jelgava in comparison to other cities, 2008

| | Inhabitants | Territory, km² | Density, inhabitants per km² | Distance to capital city Riga |
|------------|--------------------|--------------------------------------|--|--|
| Jelgava | 65635 | 61 | 1076,0 | 42 |
| Daugavpils | 105958 | 72 | 1471,6 | 229 |
| Jurmala | 55580 | 100 | 555,8 | 24 |
| Liepaja | 85050 | 61 | 1394,3 | 223 |
| Rezekne | 35883 | 18 | 1993,5 | 244 |
| Ventspils | 43299 | 58 | 746,5 | 202 |
| Riga | 717371 | 303 | 2367,6 | - |

Twining cities

Parnu (Estonia)

Cooperation agreement was signed in 1957. Collaboration fields - education and culture. City occupies 32km². Population - around 45 000.

www.parnu.ee



Siauliai (Lithuania)

Cooperation agreement was signed in 1960. Main collaboration fields – education, culture, sports, social welfare and addiction prevention. Territory of the city is 69,5 km², population – around 133800.

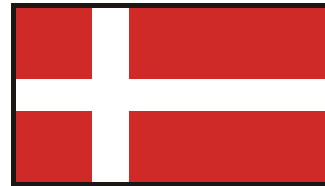
www.siauliai.lt



Vejle (Denmark)

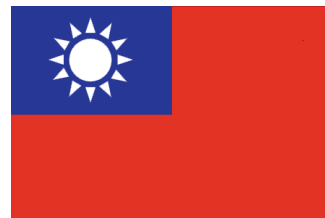
Cooperation agreement was signed in 1992. Collaboration fields - education and regular experience exchange between personnel of municipalities. The city is situated in the continental part of Denmark. Population – around 104 000.

www.vejle.dk



Hsin-Ying (Taiwan)

Cooperation agreement was signed in 2000. Collaboration in the fields of art and culture. City is situated in North of Tainan province and is the administrative centre of the province. City occupies 38,54 km². Population - around 75000.



Alcamo (Italy)

Cooperation agreement was signed in 2002. Collaboration in the fields of culture, sport, art and social welfare; It is also planned to develop commercial connections and promote entrepreneurship. Jelgava City and Alcamo Rotari clubs cooperate actively.

www.alcamo.it



Baranovichi (Byelorussia)

Cooperation agreement was signed in 2003. Main fields of collaboration – education, culture, sport, addiction prevention; There are also plans for promoting cooperation in business field.

www.baranovichy.by



Twining cities

South Administrative Region of Moscow (Russia)

Letter of intent was signed in 2003, thus initiating cooperation in field of engineering sciences. Jelgava city cooperates with ZIL factory - preparatory works are carried out to construct a factory „AMOPlant” in Jelgava that will manufacture middle-size lorries. Population in the region – around 9 000 000.
www.mos.ru



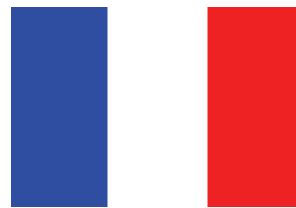
Magadan (Russia)

Cooperation agreement was signed in 2006, anticipating cooperation in such fields as culture, education, economics, sport, tourism, science and social policy. Moreover, Latvian diaspora (Latvians or their descendants who were deported during Soviet times) is willing to keep in touch with Latvia and continue to cultivate national traditions.
www.magadan.ru



Rueil-Malmaison (France)

Cooperation began during the festival in France “Etonnante Lettonie” and expanded during festival in Latvia „Un Pritemps Francais”. Cooperation agreement was signed in 2007, foreseeing collaboration in the following fields: economics, business, education, science and culture. Jelgava State Grammar School and Richelieu Lyceum cooperate successfully as well.
www.mairie-rueilmalmaison.fr



Berlin (Germany)

Letter of intent was signed in 2003. Collaboration in the fields of household management and public transportation development in Zemgale region. It also planned to cooperate to strengthen education, culture links, and also facilitating attraction of investment to Zemgale region.
www.berlin.de



Nova Odessa (Brazil)

Protocol of intention was signed on June 10, 2007 giving framework for cooperation in many fields, including support to organizations, enterprises, state institutions and NGOs in establishing contacts and promoting understanding of culture and history of both countries. Moreover, there are very many Latvians and their descendants living in Novo Odessa, in fact Latvians in this municipality form the largest Latvian diaspora in Brazil.
www.novaodessa.sp.gov.br

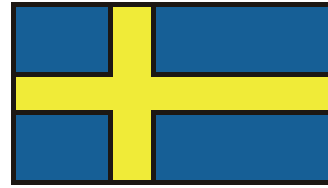


Twining cities

Hellefors (Sweden)

Cooperation agreement was signed in 2004. Main collaboration fields: city environment development and education for landscape architects. There is also cooperation in the field of cookery with the Faculty of Food Technologies, the Latvia University of Agriculture. It is also planned to cooperate in such fields as culture and social affairs.

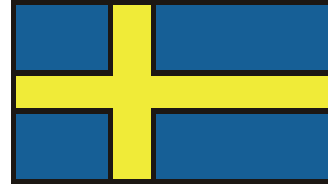
www.hellefors.se



Nacka (Sweden)

Satellite city of Stockholm with a population of 75700 inhabitants. Initially the cooperation was in terms of EU financed projects. Yet currently the collaboration has expanded and includes experience exchanges for municipal employees, and on environment, education, culture, sport and addiction prevention issues. Moreover, youth (e.g., pupils of Spidola school) and NGOs ("Parents for Jelgava") cooperate actively.

www.nacka.se



Bialystok (Poland)

Bialystok is the largest and one of the historically richest cities in North-East of Poland. Territory of the city is 102 km², population – around 295 000. Cities cooperate to promote culture links and to exchange experience of municipalities. The cooperation is further strengthened by Latvia Polish Union, Jelgava department.

www.bialystok.pl



Molodechno (Byelorussia)

Territory of the city – 27km². Situated 72km from the capital city Minsk. Population – 98200, therefore it ranks 15th largest city in Byelorussia. Colaboration in the field of culture.

www.molodechno.by



Ivano-Frankivsk (Ukraine)

Cooperation agreement was concluded in 2007, with an aim to promote cooperation in various fields: culture, education, entrepreneurship, public utilities, social welfare and to prepare joint EU projects.

www.mvk.if.ua



Culture events

Major culture events in Jelgava, 2009

| Time | Event | Place |
|-----------------------|---|--|
| February 9-14 | 11th International Ice Sculptures Festival. Theme - Galaxy of love. | Duke Jacob's Square |
| February 11 | Love Ball | Jelgava palace |
| February 7 | Festival of the best Latvian dance groups "We love in dance" | Jelgava Culture House |
| February 25 | 20th Students' Folk festival | Jelgava palace |
| March 6 - 7 | 50 th anniversary of dance ensemble "Lielupe" – anniversary concerts | Jelgava Culture House |
| March 28 | Dance festival "Baltic dances" for Baltic universities of agriculture | Jelgava palace |
| April 12 | Easter promenade | Park of Jelgava palace |
| April | International Ballet Festival | Jelgava Culture House |
| April 25-26 | 19th Latvian children and youth pop groups' and rhythmic dance groups' festival "White Goat 2009" | Jelgava Culture house |
| May 2-3 | Latvia Parade of Plants and Seedlings | Park of Jelgava palace |
| May 28-31 | Jelgava City Festival | Jelgava city |
| May 29 - September 13 | Summer events at Uzvaras park | Uzvaras park |
| June 23-24 | Līgo festival, Market of Herbs | Uzvaras park, Square behind Jelgava Culture House, Duke Jacob's Square |
| July 8-12 | International folklore festival "Baltica 2009" | Zemgale |
| July 6-12 | 3rd International Sand Sculptures Festival "Summer signs 2009" | Uzvaras park |
| August 29 | IX Latvian Milk, Bread and Honey Festival, 7th milk tetra-packs regatta | Duke Jacob's Square, river Lielupe |
| September 1 | Knowledge Day | Square behind Jelgava Culture House |
| September 1 | „Let's start new school year differently" | Raiņa park |

Culture events

| | | |
|-----------------------|--|--|
| September 19 | Michaelmas fair | Duke Jacob's Square |
| October 1 | Azemitalog's Day - first year students' festival | Jelgava palace |
| October 9-11 | 11th Latvia Amateur Theatres Festival "Jokes spring from actor" | Jelgava Culture House |
| November 11 | 50 anniversary for Ādolfs Alunāns's Jelgava theatre. Anniversary event. | Jelgava Culture House |
| November 12-13 | Students' Day 2009 | Jelgava palace |
| November 18 | Social gatherings devoted to the proclamation of independence of Latvia, "Latvia in fire-signs", Fireworks | Jelgava city, Duke Jacob's Square, Jelgava Culture House |
| December 19 | Christmas ball at palace | Jelgava palace |
| December 31-January 1 | New Year's Eve | Jelgava Culture House, Jelgava |

Sport events

Major sport events in Jelgava, 2009

| Time | Event | Place |
|------------------|--|--|
| January 7 | Challenge Cup of SEB Baltic Basketball league ZEMGALE – VEF RĪGA | Jelgava Sports Hall |
| January 21-22 | Jelgava Championship in long distance swimming, 2009 | Swimming-pool of the Latvia University of Agriculture |
| January-April | Jelgava Chess Championship | Sports House, (Address: 6 Raiņa iela) |
| January-December | Jelgava Open Match in table-tennis “Health days 2009” (10 rounds) | Sports House, (Address: 6 Raiņa iela) |
| January-December | Jelgava Championship in billiard (12 rounds) | Jelgava Secondary School N.6 |
| January-December | ZAHL Open Championship in hockey; LCYHL Open Championship in hockey | Krājbanka Ice Hall/ Ice Halls of the Republic of Latvia |
| January-February | Jelgava Championship in indoor football and Zemgale Area Championship in indoor football | Sports Hall of the Latvia University of Agriculture, (Address: 91d Tērvetes iela) |
| February 7 | „Sports Laureate 2008” | Jelgava Sports Hall |
| February 13-14 | Latvia Winter Championship in swimming, 2009 | Swimming-pool of the Latvia University of Agriculture |
| February 18 | LBL Championship of 1 st Division Zemgale – ASK/Buki | Jelgava Sports Hall |
| February 20 | Challenge Cup of SEB Baltic Basketball league ZEMGALE – ĶEIZARMEŽS | Jelgava Sports Hall |
| February 28 | Jelgava and Latvia IPF Open Championship in power lifting | Sports House, (Address: 6 Raiņa iela) |
| February-April | Jelgava City Championship/Swedbank Cup in basketball for men | Jelgava Sports Hall |
| March 7 | LBL Championship of 1 st Division ZEMGALE - LIEPĀJA | Jelgava Sports Hall |
| March 11 | Challenge Cup of SEB Baltic Basketball league ZEMGALE – LIEPĀJA | Jelgava Sports Hall |
| March 14 | Challenge Cup of SEB Baltic Basketball league ZEMGALE – TTU | Jelgava Sports Hall |
| March 20-21 | Latvia Sports Games in swimming for pupils (b. & g. born in 1990 and younger) | Swimming-pool of the Latvia University of Agriculture |
| March | Latvia and Jelgava Championship in boxing, Jelgava | Jelgava Sports Hall |
| March-December | Orienteering match held by OC “Alnis” | Jelgava city surroundings |
| April 3 | LBL Championship of 1 st Division ZEMGALE – ĶEIZARMEŽS | Jelgava Sports Hall |
| April 11 | LBL Championship of 1 st Division ZEMGALE – VALMIERA | Jelgava Sports Hall |

Sport events

| | | |
|-------------------|---|---|
| April 25 | Dance sports competition "Jelgava municipality Cup" | Jelgava Sports Hall |
| April | Sports Service Centre Award „Grand Prix 2009” | Jelgava Sports Hall |
| April | Jelgava City Open Championship in volleyball | Jelgava Sports Hall |
| April and October | Jelgava City Open Championship in fishing | Pasta Island |
| April | Latvia Championship in curling for mixed teams | Jelgava Krājbanka Ice Hall |
| May 1 | Spring Cup – Latvia and Baltic Championship in rowing and canoeing | Rowing centre in Pasta Island |
| May 1 | Relay-races in streets of the city | Start at Duke Jacob’s Square |
| May 1-3 | International Boxing Tournament „Jelgava Olympic Ring” | Jelgava Sports Hall |
| May 2 | Jelgava City Open Championship in karate | Jelgava Sports Hall |
| May 9 | Street Basketball Tournament for youth | Duke Jacob’s Square |
| May 14-15 | Jelgava Open Championship 2009, the Stage of Latvia Cup, A.Kres’s Cup in butterfly-stroke | Swimming-pool of the Latvia University of Agriculture |
| May 17 | Jelgava J.K.A. Championship in karate-do | Sports House, (Address: 6 Raiņa iela) |
| May 21-24 | SELL games | City sports centres |
| May 23 | Jelgava City Sports Day | Near Jelgava Sports Hall |
| May 30 | Baltic Championship in water-motorcycling | River Lielupe |
| May-November | Latvia 1 st League Championship in football | Ozolnieki stadium |
| May | Olympic Runners’ Day | Jelgava city sports centres |
| May | International Curling match „Jelgava Cup” | Jelgava Krājbanka Ice Hall |
| June 14 | Jelgava Yacht-club’s season opening regatta „Laser” class | Yaht-club centre in Pils Island |
| June 23 | „Līgo regatta” for yachts | River Lielupe |
| June 26-28 | Latvia Youth Olympiad | City sports centres |
| July | Jelgava BJSS Junior Championship in rowing and canoeing | Yacht-club centre |
| August 1 | Latvia Championship Stage in water motor sports | River Lielupe |
| August 29 | Jelgava City Championship in rowing and canoeing | Rowing centre in Pasta Island |
| August | Jelgava City Open Championship in boat-racing | BJSS rowing centre in Palace Island |
| September 7-11 | Olympic Week | City sports centres |
| September | Jelgava Championship for doubles and „Jelgava Cup for doubles” in rowing and canoeing | BJSS rowing centre in Palace Island |
| September | Jelgava City Council Cup in basketball for men | Jelgava Sports Hall |

Sport events

| | | |
|------------------|--|--|
| October 3 | Zemgale Autumn Marathon – Latvia and Baltic Championship in rowing and canoeing | Rowing centre in Pasta Island |
| October 3 | Jelgava and Latvia Open GPC Championship in power lifting | Sports House, (Address: 6 Raiņa iela) |
| October 3 | Jelgava City Open Championship in freestyle wrestling for children and adults. V.Melgavis Cup. | Jelgava Sports Hall |
| October 16 | Olympic Swimming Relays among different schools of Jelgava | Swimming-pool of the Latvia University of Agriculture |
| October-December | Sports Service Centre Cup in basketball for men | Jelgava Sports Hall, Sports House, (Address: 6 Raiņa iela) |
| November | Jelgava Championship in judo | Jelgava Sports Hall |
| November | International Curling Match „Zemgale Cup” | Jelgava Krājbanka Ice Hall |
| December 12 | Jelgava and Latvia IPF Open Championship in power lifting | Sports House, (Address: 6 Raiņa iela) |
| December 12 | Sports Festival for preschool children „Hey, hey, hey, come into covey!” | Jelgava Sports Hall |
| December 17-18 | Christmas Competition at Jelgava Special Swimming School. A.Miskarovs Cup in swimming | Swimming-pool of the Latvia University of Agriculture |
| December 29 | New Year’s Sprint at Jelgava Special Swimming School. J.Misters Cup for 50 m breast-stroke | Swimming-pool of the Latvia University of Agriculture |
| December | Jelgava Open Championship in table-tennis | Sports House, (Address: 6 Raiņa iela) |
| December | New Year’s Cup in volleyball | Jelgava Sports Hall |

Information and assistance services

Assistance

| | Phone number |
|-------------------------|--------------------------------------|
| Institution | 01 |
| Firefighting and rescue | 112 +371 63027720 |
| Police | 02 +371 63004200 +371 63004202 |
| Emergency medical care | +371 63022910 |
| Municipal police | +371 63025615 |
| Home Guard | +371 63024810 |

Communications and transport

| | |
|---|---------------|
| Directory inquiries | 1180 |
| Lattecom Client Service | 177 |
| LMT (<i>mobile operator</i>) 24-hour information service | +371 80000076 |
| Tele 2 (<i>mobile operator</i>) 24-hour information service | +371 29560600 |
| Bite (<i>mobile operator</i>) service phone | +371 25850110 |

| | |
|-----------------------------|---------------|
| Latvian Railway inquiries | 1181 |
| Jelgava Bus Fleet inquiries | +371 63022513 |
| Jelgava bus station | +371 63022639 |

| | |
|---------------|--------------------------------|
| Taxi services | +371 28440044 +371 27036400 |
|---------------|--------------------------------|

Services

| | |
|--|--------------------------------|
| Jelgava city and district tourism information centre | +371 63022751 |
| Housing agency "Jelgavas nekustamā īpašuma pārvalde", repairs and public utilities emergency | +371 63020000 |
| Water-supply company "Jelgavas Ūdens" | +371 63021091 +371 63028952 |

Information and assistance services

Jelgava City Council

11 Liela iela, Jelgava, LV-3001
Phone: +371 63005522 (Information agency)
Fax: +371 63029059
E-mail: dome@dome.jelgava.lv
www.jelgava.lv

Jelgava Education department

22 Svētes iela, Jelgava, LV-3001
Phone: +371 63012460
Fax: +371 63012490
E-mail: sv@jelgava.lv
www.jip.jelgava.lv

Agency „Kultūra” (culture)

5 Kr. Barona iela, Jelgava, LV-3001
Phone: +371 63023461
Fax: +371 63084676
E-mail: kcn@dome.jelgava.lv
www.kultura.jelgava.lv

Jelgava Social affairs department

9 Pulkveža O. Kalpaka iela, Jelgava, LV-3001
Phone: +371 63007489
Fax: +371 63007536
E-mail: soc@dome.jelgava.lv
www.jelgava-soclp.lv

Agency „Pilsētsaimniecība” (public utilities)

16a Pulkveža O. Kalpaka iela, Jelgava, LV-3001
Phone: +371 63084470
Fax: +371 63023869
E-mail: ppap@dome.jelgava.lv
www.pilsetsaimnieciba.lv

Jelgava regional Adults education centre

33 Svētes iela, Jelgava, LV-3001
Phone: +371 63082101
Fax: +371 63007033
E-mail: birojs@jelgava.lv
www.jrpc.lv

Sport Service centre

6 Raiņa iela, Jelgava, LV-3001
Phone: +371 63027504
Fax: +371 63027503
E-mail: jssc@dome.jelgava.lv